

REF	SIZE	TYPE	DESCRIPTION
A	2 3/8" CL150	SPLIT FLANGE	AGITATOR, 24" DIA SPAN RCI
B	4" CL150	SPLIT FLANGE	SPRAY BALL
C	4" CL150	SPLIT FLANGE	PROCESS INLET
D	4" CL150	SPLIT FLANGE	PROCESS VENT
V	4" CL150	SPLIT FLANGE	SPRAY BALL
H	8" CL150	SPLIT FLANGE	HANDHOLE, W/ CANTY FUSEVIEW SIGHT GLASS
L	3" CL150	THD SPLIT FLANGE	BOTTOM OUTLET W/ FLUSH VALVE (3" X 2" LP, TEMP SENSOR)
M			MOTOR, 2HP
N			DRIVE ASSTY, VMX-150 W/ DRY SEAL TACHOMETER
J1	1 1/2" CL300	LAP JOINT	JACKET OVERFLOW
J2	1 1/2" CL300	LAP JOINT	JACKET OVERFLOW
J3	1 1/2" CL300	LAP JOINT	JACKET SHELL CONNECTION W/ BLIND FLANGE
J4	1 1/2" CL300	LAP JOINT	JACKET SHELL CONNECTION W/ BLIND FLANGE
J5	2" CL300	LAP JOINT	JACKET HEAD CONNECTION W/ 1-1/2" AGITATING NOZZLE
J6	2" CL300	LAP JOINT	JACKET HEAD CONNECTION W/ 1-1/2" AGITATING NOZZLE
J7	1 1/2" CL300	LAP JOINT	JACKET DRAIN
J8	1 1/2" CL300	LAP JOINT	JACKET DRAIN
J9	1 1/2" CL300	LAP JOINT	JACKET VENT

SEE PFAUDLER ORDER SPEC DATA SHEET FOR COMPLETE COMPONENT DESCRIPTION

NOTES:

- 9119 GLASS DARK BLUE GLASTEEL
 9 = MEETS DOW CHEMICAL GLASS SPECIFICATION. GLASS THICKNESS FROM 40-90 MILS WITH ISOLATED AREAS TO 100 MILS. ALL ATTEMPTS WILL BE MADE TO KEEP THE GLASS-LINING WITHIN THESE PARAMETERS. 20,000 VOLT SPARK TEST. PLUG FREE.
 SEE DOW CHEMICAL SPECS. G8S-1701-03, SECTION 3 (GLASSING SPECS).
- PRESSURE RELIEF DEVICE(S) PER PAR. UG-125 OF ASME CODE, SECT VIII DIV 1, MUST BE PROVIDED AND INSTALLED BY CUSTOMER.

- SHIPPED LOOSE:
 --- BOTTOM OUTLET FLANGE & GASKET
 --- ALL PROCESS NOZZLE GASKETS
 --- FLUSH VALVE
 --- (2) COMPLETE SETS OF SPARE GASKETS
 --- MOTOR AND REDUCER

(2) SPRAY BALLS AND BOLTING
 --- TRI-CLAMP GSCKTS & CLAMPS ARE NOT PROVIDED

- IN ORDER TO AVOID INJURY AND ASSURE THE SAFE OPERATION OF ALL PFAUDLER VESSELS, NO VESSEL SHOULD BE OPERATED WITHOUT ALL OPENINGS AND PASSAGeways SECURELY CLOSED. IN CASES WHERE THE TOP HEAD OF THE VESSEL HAS BEEN REMOVED, THE OPENING SHOULD BE SECURED BY A SUITABLE COVER WHILE THE VESSEL IS IN OPERATION. ALL PERSONS OPERATING A PFAUDLER VESSEL SHOULD HAVE PRIOR INSTRUCTION IN THE PROPER USE OF THE VESSEL DURING OPERATION.

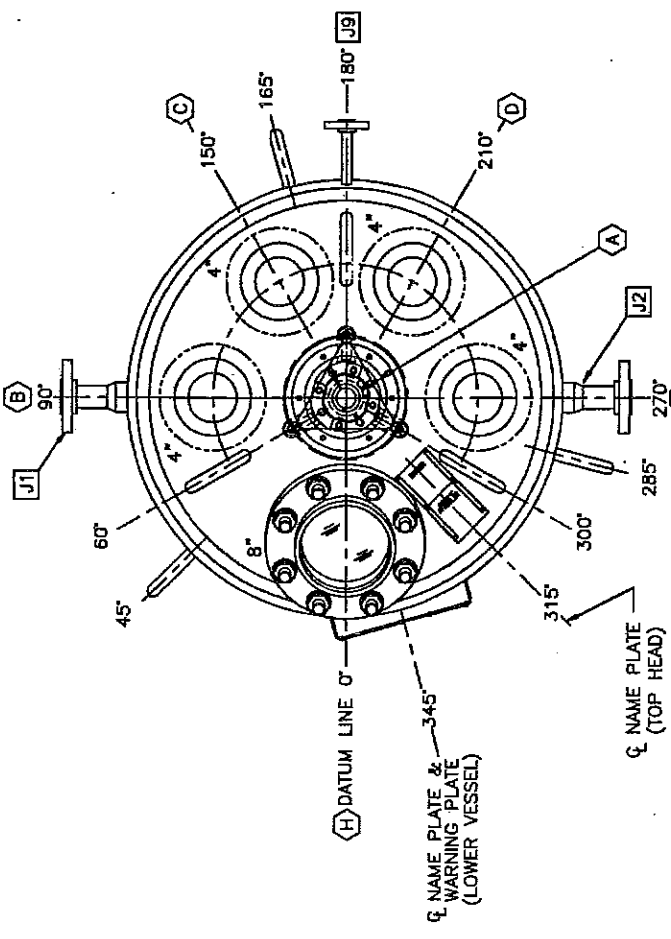
- STENCIL ON SIDE OF VESSEL IN 2" HIGH LETTERS
 (2) PLACES, APPROX 180° APART
 "GLASS LINED"
 DO NOT HAMMER
 WELD OR BURN
 P.O.# 63574165
 ITEM #R031058

- RIBOFLAVIN TEST IN FINAL ASSEMBLY WITH TWO SPRAY BALLS LOCATED AT 90 AND 270 DEGREES. THE RIBOFLAVIN TEST WAS CONDUCTED FOR 8 MINUTES, WITH A WATER PRESSURE OF 27 PSI AND A WATER FLOW RATE OF 25.5 GPM.

- THE (2) SPRAY BALLS SHALL BE REMOVED FROM THE VESSEL PRIOR TO OPERATION OF THE VESSEL.

- VESSEL OPERATING TEMPERATURE LIMITED TO 400°F DUE TO CANTY FUSEVIEW SIGHT GLASS.

- VESSEL OPERATING PRESSURE LIMITED TO 100 PSIG DUE TO ML-200 SEAL. SEAL HOUSING CHAMBER PRESSURE TO BE 50 PSIG MINIMUM ABOVE VESSEL PRESSURE, BUT NOT TO EXCEED 150 PSIG.

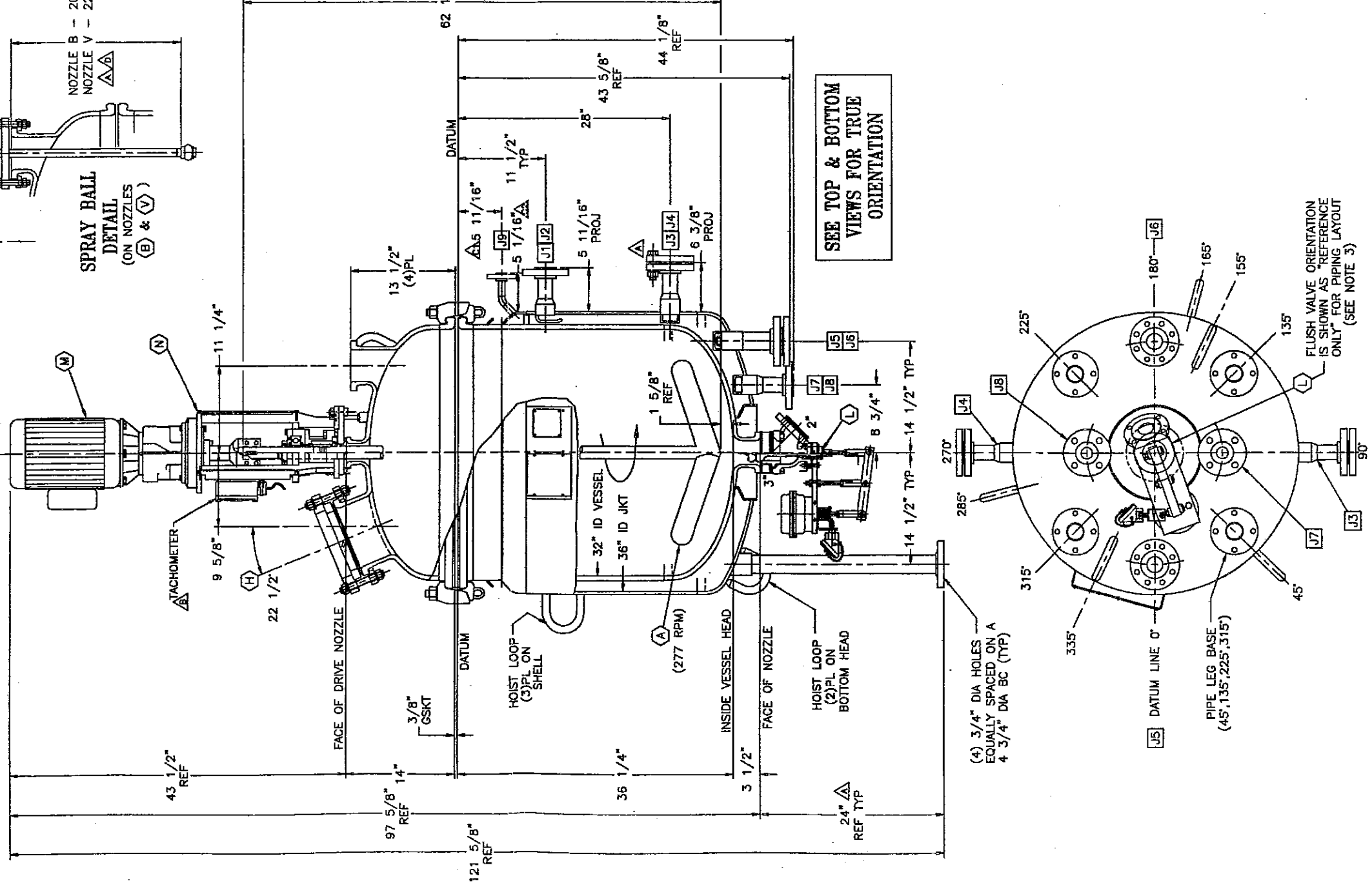
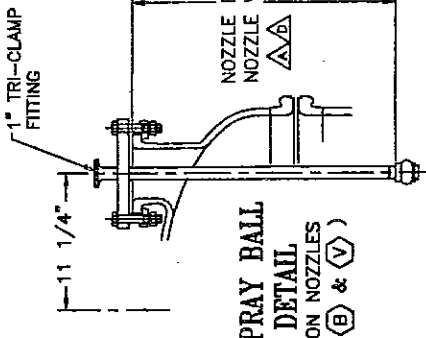


Q NAME PLATE (TOP HEAD)

Q NAME PLATE & WARNING PLATE (LOWER VESSEL)

1" TRI-CLAMP FITTING

SPRAY BALL DETAIL
(ON NOZZLES (B) & (V))



SEE TOP & BOTTOM VIEWS FOR TRUE ORIENTATION

FLUSH VALVE ORIENTATION IS SHOWN AS "REFERENCE ONLY" FOR PIPING LAYOUT (SEE NOTE 3)

BASE MATERIAL	
VESEL	JACKET
SA-516 GR 65	---
SA-516 GR 65	SA-516 GR 70
SA-516 GR 65	SA-516 GR 70
SEALER	---
---	SA-516 GR 70
THICKNESS	---
VESEL	JACKET
(MIN) 563" SE	---
(NOM) 575" F&D	---
(MIN) 5/8"	3/8"
(MIN) 240"	---
DESIGN & INSPECTION	---
VESEL	JACKET
YES	YES
150/FV	125/125"
450	450
-20	-20
150	140
SPOT	NO
CORROSION ALLOWANCE	NONE
NONE	NONE
NONE	NONE
* WITH FULL VACUUM IN VESSEL	
SEE OPERATING LIMITATIONS, INSTALLATION & MAINTENANCE INSTRUCTIONS IM81-100	
FOR INSTALLATION IN AREAS NOT SUBJECT TO WIND, SEISMIC ZONE 0 (UBC)	
SPECIFIC GRAVITY OF VESSEL CONTENTS NOT TO EXCEED 1.5	
FV = FULL VACUUM	
CUSTOMER INSPECTION	

CUSTOMER: DOW CHEMICAL USA
 ADDRESS: MIDLAND, MI
 CONSIGNEE: DOW CHEMICAL USA
 ADDRESS: MIDLAND, MI
 CUST. ORDER NO.: 65574165
 CUST. TAG NO.: Y-541

REVISION	DATE	DESCRIPTION	APPROVED	DRAWN	DATE	DESCRIPTION
A	01/21/03	PER CUSTOMER APPROVAL		WARRINGTON	01/16/03	VESEL FINISH & ACCESSORY MATERIALS
B	02/24/03	ADDED TACHOMETER, ECH 0415		WARRINGTON	01/21/03	VESEL 9119 (NOTE #1)
C	02/24/03	DIMENSION WAS 4 7/8", ECH 0415		WARRINGTON	01/21/03	ACCESS: SEE ORDER SPEC DATA SHEET
D	02/24/03	DIMENSION WAS 4 5/8", ECH 0415		WARRINGTON	01/21/03	PLUGS: NONE (PLUG FREE)
E	02/24/03	REV. SPRAY BALLS & NOZ. & ECH 0415		WARRINGTON	01/21/03	CEMENT: NONE
F	02/24/03	REV. SPRAY BALLS & NOZ. & ECH 0415		WARRINGTON	01/21/03	GASKETS: CR STYLE NSBN
G	02/24/03	REV. SPRAY BALLS & NOZ. & ECH 0415		WARRINGTON	01/21/03	PAINT: STANDARD AMERLOCK EPOXY 400 BL-5 PER D.S. 61-200 (HORIZON BLUE)
H	02/24/03	REV. SPRAY BALLS & NOZ. & ECH 0415		WARRINGTON	01/21/03	CAP. FULL 100 GAL WT. UNKTD
I	02/24/03	REV. SPRAY BALLS & NOZ. & ECH 0415		WARRINGTON	01/21/03	CAP. FULL 147 GAL WT. UNKTD
J	02/24/03	REV. SPRAY BALLS & NOZ. & ECH 0415		WARRINGTON	01/21/03	WT./ACT'S 2510 LBS.
K	02/24/03	REV. SPRAY BALLS & NOZ. & ECH 0415		WARRINGTON	01/21/03	1RS

VESEL AND/OR JACKET COMPONENTS WELDED IN ACCORDANCE WITH WELD PROCEDURES IN SECTION D-2-1.5 OF THE PSA & ROCHESTER WELDING MANUAL UNLESS OTHERWISE SPECIFIED. ALL DIMENSIONS ARE IN INCHES

DESIGNED IN ACCORDANCE WITH SECTION VII DIV. 1 OF THE ASME CODE INCLUDING REQUIREMENTS FOR GLASS-LINED VESSELS, & IF APPLICABLE, CUSTOMER SPECS. WITH PFAUDLER EXCEPTIONS UNLESS OTHERWISE SPECIFIED. ALL TANK NOZ. FURNISHED WITH SPLIT FLG'S (ASME B16.5 DRILLING WORK FROM DIMENSIONS - DO NOT SCALE - SEE PLAN VIEW & BOTTOM VIEW FOR ORIENTATION

THIS DOCUMENT IS THE PROPERTY OF PFAUDLER INC. IT IS TO BE USED ONLY FOR THE PURPOSE FOR WHICH IT WAS LENT AND MUST NOT BE REPRODUCED WITHOUT WRITTEN PERMISSION OR USED IN ANY WAY DETRIMENTAL TO THE INTEREST OF THIS COMPANY. IT IS SUBJECT TO RETURN UPON REQUEST

Pfaudler Inc.
 Rochester, NY

TITLE: R132-100-150-125
 100 GALLON
 32" ID X 36 1/4" DP
 DRAWING NO. R031058
 SHEET 11 D